

# Our guide to fitting small graphics yourself...

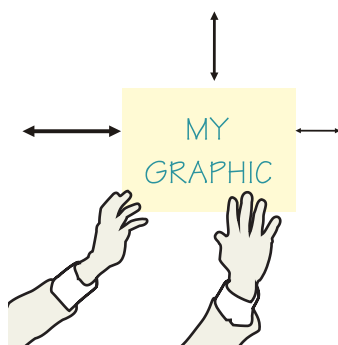
We understand that you might want to fit smaller graphics yourself so here is out our guide on how to get good results - just like us professionals!

## before you start

Ensure that the area you're applying graphics to is not only suitable for vinyl stickers but prepared ready .

Wash it down with mild detergent and water and then finish off with a fast evaporating alcohol based fluid like meths. DO NOT use turps as this can leave the surface greasy meaning the vinyl won't stick and it can also attack the adhesive of the vinyl, shortening its life-span.

1



Offer up your graphic to your chosen position so that it is pleasing to the eye, usually this will be equal distance from the edges of your chosen area - a tape measure is a good idea too!

2



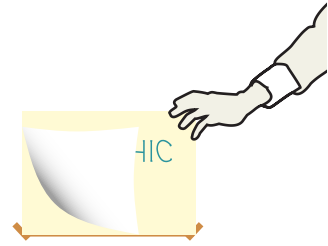
When you're happy with the position, using sticky tape (masking tape is best), put 2 pieces at the top corners of your graphic. You can make some final adjustments to the positioning using this method by removing the tape from one corner and moving it up or down a little to get it level.

3



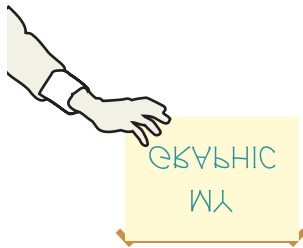
Next, run some tape along the top, straight edge of your graphic.

4



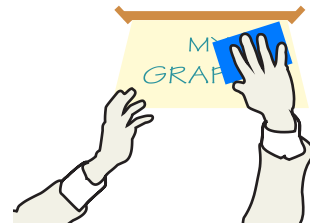
Then, hold the graphic away from the surface and gently peel the shiny paper backing away from the thin sticky paper

5



Remove the shiny paper backing altogether so you are left with your graphic and the thin paper. DO NOT let the sticky graphic touch the surface area.

6



Pull the graphic taut and very gently starting at the top edge and rub along the graphic, working downwards and from side to side so that the graphic sticks to the surface you're applying it to.

7



Using something hard but not sharp, press down on the graphic, paying attention to the letters / logo. When you're confident it has stuck, gently remove the masking tape from the top edge.

8



Finally, gently remove the thin sticky paper. Provided you have pressed everything down well, they will stay in position.